

Schrems West Michigan Trout Unlimited, Inc.



2015 Annual Report

2015 OVERVIEW

Schrems West Michigan Trout Unlimited is making a difference in West Michigan. Highlights for 2015 include:

Conservation

- **Kent County Brook Trout Study.** In year two of this multi-year project, our team made significant habitat improvements in Blakeslee, Rum, Cedar and Shaw Creeks, tributaries of the Rogue and in Tyler Creek and the Pratt Lake Drain which feed the Coldwater River. Total 2015 investment: \$76,700.
- **Buck Creek Monitoring.** During Fiscal 2015 we began phase I of a multi-year project to monitor the health of Buck Creek, a cold water tributary of the Grand River.
- **Rogue River Home Rivers Initiative.** We continue to provide monetary and volunteer support for this TU National program.
- **Michigan Trout Unlimited.** We donated \$2,000 to MITU to support the acquisition of a new fish shocking machine.

Education/Outreach

- **Schrems Scholarship.** We raised an additional \$7,600 increasing our endowment at MSU to \$70,000.
- **Salmon in the Classroom.** We funded two new programs bringing the total to 16.
- **Project Healing Waters.** Each spring and fall, Schrems partners with the Kalamazoo Valley Chapter to take veterans from the Battle Creek VA hospital fishing on the Muskegon River.

Membership

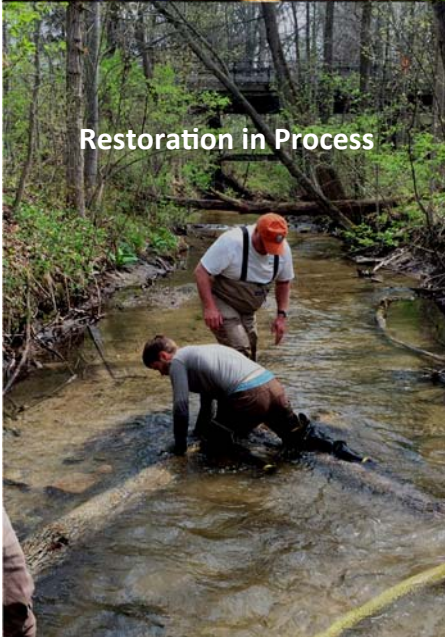
- At year-end 2015 we had 894 members, 104 more than the prior year
- Volunteer hours increased to 3,200 in 2015, an increase of more than 1,100 hours over the prior year.
- We held 8 membership events including two inaugural Women on the Water seminars which engaged more than 60 participants in activities ranging from fly casting to fly tying.

Fundraising

- Nearly 225 members attended our annual banquet, netting more than \$17,000 to fund future programs.
- We secured a \$25,000 grant from MDEQ, and initiated work to monitor the health of Buck Creek.
- We initiated phase II of the Kent County Brook Trout study and began the initial drawdown of our \$149,000 grant from the National Fish and Wildlife Federation.



Successful Restoration



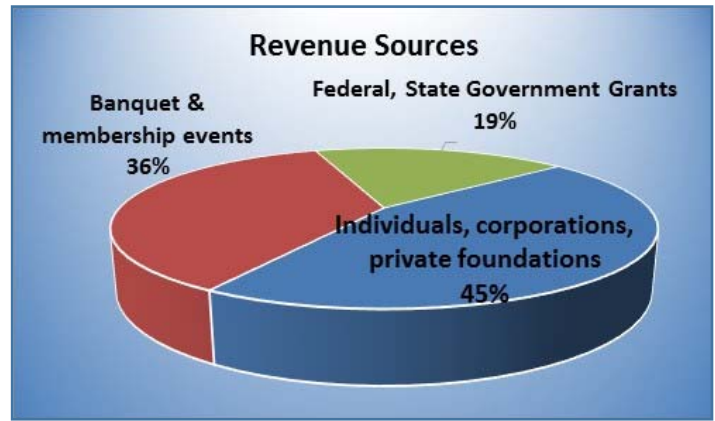
Restoration in Process



Measuring Fish Populations

Our Chapter

- Our Mission is to conserve, protect and restore West Michigan’s cold-water resources ensuring healthy fish populations for future generations.
- Schrems West Michigan Trout Unlimited, Inc. was incorporated in March, 1962 as TU’s 21st Chapter.
- We closed fiscal 2015 with 894 members, up 104 from Fiscal 2014.
- Volunteer hours exceeded 3,200 in 2015, an increase of 1,100 hours over the prior year .

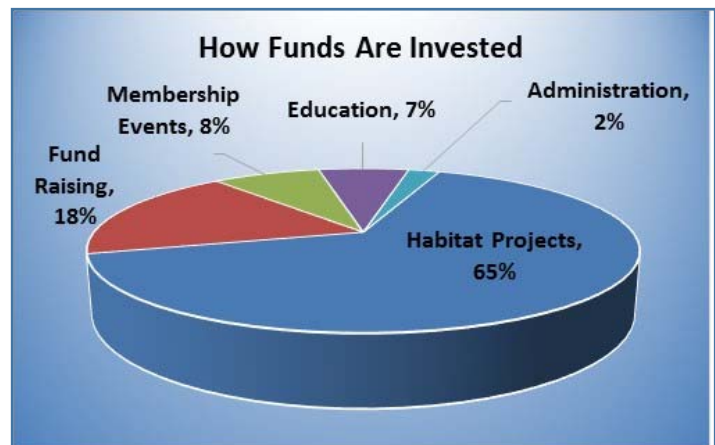


Our Funding

Fiscal 2015 Revenue grew 3.3 percent to \$145,934 with 45 percent coming from corporate and private foundation grants and individual donations; 36 percent generated by our Banquet and other membership events, and 19 percent from Federal and State government grants. Major contributors for 2015 included the Grand Rapids Community Foundation, the Charlevoix County Community Foundation and the Frey Foundation. We also received grants from several governmental agencies including, but not limited to the Michigan Department of Environmental Quality, the U.S. Fish and Wildlife Service, the National Fish and Wildlife Federation, Plainfield Township and the City of Rockford. We thank all for their ongoing support.

Our Investments

We are a very efficient all volunteer organization with only two percent of costs needed to cover administrative activities. As a result, we are able to invest 98 percent of funds raised into our chapter’s activities; habitat (65 percent), membership events (8 percent); 7 percent into education programs with fundraising, essentially the cost of the annual banquet, representing 18 percent.



Habitat Programs

- **Rogue River Home Rivers Initiative.** During fiscal 2015, we made our fourth annual \$5,000 donation to the Rogue River Home Rivers initiative. We fully support and work closely with Nichol Demol and her team.
- **Buck Creek Monitoring.** We began phase I of a project to monitor the health of Buck Creek, a cold water tributary of the Grand River, including placing temperature monitors and using MITU's team and shocking equipment to execute a baseline fish inventory. We also completed the second annual in-stream cleanup.



- **Kent County Brook Trout Study.** When this multi-year program is completed, we will have raised and invested over \$284,000 to improve the quality of the Rogue and Coldwater rivers watersheds. During Fiscal 2015, year two of the project, our team made significant habitat improvements in Blakeslee, Rum, Cedar and Shaw Creeks, all tributaries of the Rogue and in Tyler and the Pratt Lake Drain which feed the Coldwater River. Total 2015 investment: \$76,700.



During 2016 we plan on removing a dam on Rum Creek as well as initiating more in-stream improvements throughout Kent County. A point worth noting, at the end of fiscal 2014, we removed the remaining rubble from a collapsed dam in the Rogue River, thus improving fish passage and eliminating safety hazards created by exposed rebar and sharp concrete edges. We also executed fish counts in several more streams that feed the Rogue to establish baseline information.

- **Coldwater and Tyler Creek.** During July, we completed our final fish count in the Coldwater River along the Dolan Nature Area to measure the effectiveness of the in-stream improvements the Schrems team made during Fiscal 2010. The results were disappointing. Unlike prior years, where fish populations showed significant improvements, i.e. 2,000 trout/mile in 2013 vs. 300 trout/mile in 2010, this year's count was estimated at 900 trout/mile or around 50 percent the size of the prior two-year's population estimate. It is worth noting, that our fish count was executed after the upstream river bank damage event caused by tree removal and bank destabilization upstream of Freeport performed by the Intercounty Drain Board. We are actively monitoring this situation in concert with MITU and other State agencies to ensure a swift resolution of this matter (i.e. bank restoration).



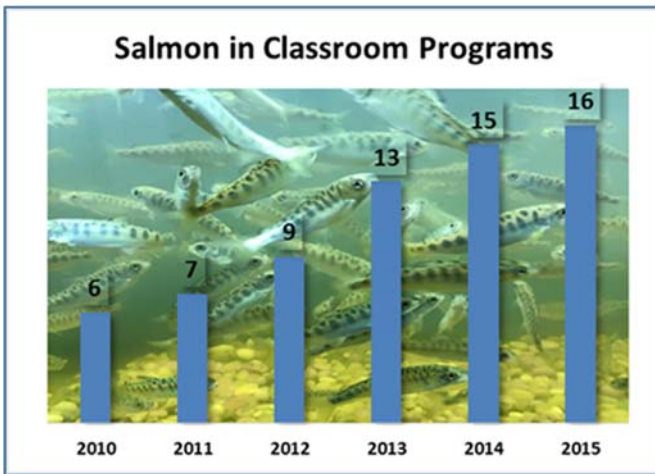
Education

- Schrems Scholarship.** During fiscal 2015 we donated an additional \$7,600 to our scholarship program at Michigan State University bringing the total balance to \$70,000. This program, which was launched in 1987, provides financial support for a Michigan State University Department of Fisheries and Wildlife student pursuing a degree consistent with SWMTU's mission and values. Nearly 30 students, including Michigan Trout Unlimited's Executive Director, Dr. Bryan Burroughs, have received this scholarship. Our near-term goal is



2015 Scholarship Recipient Mitch Nesbit

to raise an additional \$30,000 to bring the total endowment to \$100,000.



- Salmon in the Classroom.** SWMTU also sponsors several youth education programs including Michigan DNR's Salmon in the Classroom program where middle/high school students hatch, care for and raise salmon in their classroom from fall until spring. Schrems pays for the initial setup, fish tanks, chillers, etc. at a cost of about \$1,200 per setup. During fiscal 2015, while one school elected to discontinue the program, we added two new schools, bringing our total to 16.

Outreach

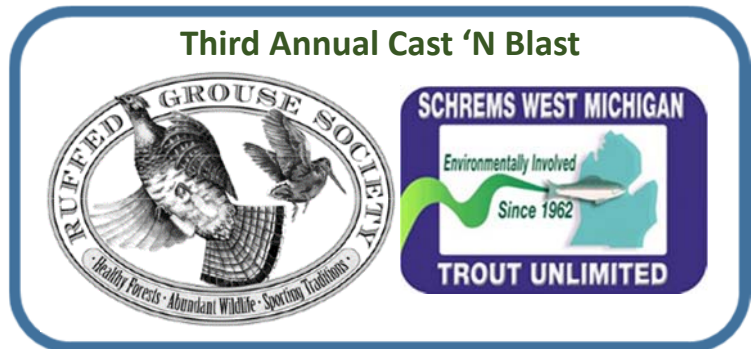
- Project Healing Waters™.** Each spring and fall, members of the Schrems team partner with the Kalamazoo Valley TU Chapter to take veterans from the Battle Creek VA hospital on a Muskegon River float trip during salmon and steel-head seasons. Fiscal 2015 was the fourth year of Schrems' participation.



- Reel Recovery™.** Members of the Schrems team also participate annually in a Reel Recovery Retreat, a program which introduces the healing powers of fly-fishing, to help men during their cancer recovery process. Fiscal 2015 was our third year of participation in this very moving event.
- Other Initiatives.** During 2015 we funded two fly fishing clubs: one serving East Grand Rapids High School and the other serving North View students. Our goal is to energize and engage the next generation of river stewards.

Membership Events

- In addition to our Banquet, which takes place during April in Grand Rapids and the annual meeting, which we hold at Michigan State's Wa Wa Sum facility in June, we held several membership events during fiscal 2015 as shown below. Of significant note was our inaugural two-part Women in Fly Fishing program. Both events, which featured noted women fly angler and author Jen Ripple, were well attended and received very positive participant feedback. Our membership events are designed to both educate and energize our members throughout the year.



What's Next.

Schrems West Michigan Trout Unlimited is committed to making a difference, and while we are making progress, there is still a lot to do. Key initiatives for Fiscal 2016 are shown below.

Conservation

- **Kent County Brook Trout Study.** Complete Phase I and begin the execution of Phase II focusing on improvements in Cedar, Stegman and Rum Creeks as well as the Pratt Lake Drain. Phase II will be funded in part by a \$149,000 grant from the National Fish and Wildlife Federation.
- **Buck Creek Monitoring.** Expand in-stream monitoring and clean up activities on Buck Creek. We received a \$25,000 grant from MDEQ to support these efforts.
- **Rum Creek Restoration.** Work with Wolverine Worldwide and the City of Rockford to develop a plan to improve Rum Creek which runs through the former Tannery site.
- **Rogue River Home Rivers Initiative.** Continue our financial and team support for this key TU National program.
- **Muskegon River.** Evaluate options for improving the quality of the Muskegon River by reducing erosion caused by blown out sandbanks.
- **Strategic Direction.** Review the Kent County Coldwater Inventory (we developed this in 2010/2011) to identify the next set of conservation initiatives.



Education/Outreach/Membership

- **Schrems Scholarship.** Developing an initiative to raise an additional \$30,000 for our MSU scholarship fund to bring the total endowment to \$100,000 thus allowing for higher scholarship awards.
- **Salmon in the Classroom/Trout Camp.** Add two new Salmon in the Classroom programs and sponsor a girl and boy to attend the Kalamazoo Valley Chapter's Trout Camp.
- **Women on the Water.** Extend programs and activities to engage women anglers.
- **Project Healing Waters/Reel Recovery.** Continue support.
- **Membership.** Continue to offer engaging and informational events including developing a strong follow up women's program.

Fiscal 2015 Financial Statements

Summary Profit & Loss			
	Fiscal Year Ended September		2015A v 2014 A
	2015A	2014A	
Revenue			
Restricted			
Habitat Projects	\$ 80,084.48	\$ 73,077.00	\$ 7,007.48
Trout Camp	-	-	-
Salmon in The Classroom	-	629.99	(629.99)
Scholarship	7,675.00	7,850.00	(175.00)
Total Restricted	\$ 87,759.48	\$ 81,556.99	\$ 6,202.49
Unrestricted			
Spring Banquet	\$ 43,164.21	\$ 41,769.72	1,394.49
General Donations	5,245.00	2,925.00	2,320.00
National Rebates	165.00	45.00	120.00
Investment or Interest	16.30	15.25	1.05
Refund/Reimbursement	-	-	-
Membership Events	9,351.85	14,908.95	(5,557.10)
Hatch Guide Revenue	231.80	118.40	113.40
Total Unrestricted	\$ 58,174.16	\$ 59,782.32	\$ (1,608.16)
Total Revenue	\$ 145,933.64	\$ 141,339.31	\$ 4,594.33
Cost of Goods Sold	-	-	
Gross Profit	\$ 145,933.64	\$ 141,339.31	\$ 4,594.33
Expenses			
Banking and PayPal Fees	\$ 849.98	\$ 1,533.05	(683.07)
Banquet Expense	25,246.64	17,812.48	7,434.16
Dues & Subscriptions	567.34	357.00	210.34
Education Expenses	9,381.70	16,496.08	(7,114.38)
Habitat Expenses	93,420.94	57,959.00	35,461.94
Insurance - Liability	110.00	110.00	-
Legal & Professional Fees	-	2,500.00	(2,500.00)
Other Professional Fees	-	-	-
Accounting & Audit Fees	171.15	3,071.15	(2,900.00)
Other Officers Expense	969.68	129.40	840.28
Promotional	164.97	-	164.97
Office Expenses	-	-	-
Postage Other	115.80	193.32	(77.52)
Rent or Lease	537.00	484.00	53.00
Seminars & Event Expense	11,027.04	6,816.41	4,210.63
Supplies	526.62	126.74	399.88
Taxes & Licenses	70.00	70.00	-
Other Expense	41.85	367.64	(325.79)
	\$ 143,200.71	\$ 108,026.27	\$ 35,174.44
Net Income	\$ 2,732.93	\$ 33,313.04	\$ (30,580.11)

Fiscal 2015 Financial Statements

Summary Balance Sheet

	Fiscal YTD ended Spetember		
	2015A	2014A	2014A
Assets			
Cash on Hand	\$ -	\$ -	\$ -
Comerica Checking	-	6,334.20	(6,334.20)
Old National Checking	51,412.51	-	51,412.51
Comerica Savings	-	84,606.48	(84,606.48)
Total Cash	51,412.51	90,940.68	(39,528.17)
Accounts Receivable	17,097.48	15,000.00	2,097.48
Prepaid Expenses		743.28	
Grants Pending Funding	161,260.52	160,000.00	1,260.52
Total Assets	\$ 229,770.51	\$ 266,683.96	\$ (36,170.17)
Liabilities & Equities			
Accounts Payable	\$ 25,767.94	\$ 9,736.84	\$ 16,031.10
Deferred Revenue	171,260.52	175,015.00	(3,754.48)
Funded Grants	-	51,923.00	(51,923.00)
Total Liabilities	197,028.46	236,674.84	(39,646.38)
Equity			
Opening Balance	15,865.09	15,865.09	-
Retained Earnings	14,144.03	5,830.99	8,313.04
Net Income	2,732.93	8,313.04	(5,580.11)
Total Equity	32,742.05	30,009.12	2,732.93
Total Liabilities & Equity	\$ 229,770.51	\$ 266,683.96	\$ (36,913.45)

Balance Sheet Detail

Accounts Receivable		Accounts Payable	
Donation City of Rockford, Brook Trout Study	\$ 10,000.00	Dr. Luttenton Cedar Creek Brook Trout Study	\$ 2,700.00
NFWF	4,410.38	Streamside #15-64-01 Buck Creek	2,687.10
MIDEQ Buck Creek Monitoring	2,687.10	TU National #3 Blakeslee Monitoring	1,071.98
	\$ 17,097.48	Streamside # 15-23-02 Rum, Rogue & Stegman	3,338.40
		SPE #524 Cedar Creek	15,669.00
		Above & Beyond #E12647	301.46
			\$ 25,767.94
Grants Pending Funding		Deferred Revenue	
National Fish & Wildlife Grant	139,497.62	National Fish & Wildlife Grant	\$ 139,497.62
CMI-CWF Buck Creek Monitoring Grant	21,762.90	CMI-CWF Buck Creek Monitoring Grant	21,762.90
	\$ 161,260.52	City of Rockford, Brook Trout Study	\$ 10,000.00
			\$ 171,260.52

Fiscal 2015 Financial Statements

Statement of Cash Flows

YTD Fiscal 2015 – Oct 1, 2014 - September 30, 2015

Operating Activities

Net Income	\$ 2,732.93
Adjustments to Reconcile Net Income to Net Cash provided by operations:	
Accounts Receivable	(2,097.48)
Grants Pending Funding	(1,260.52)
Prepaid Expense	743.28
Accounts Payable	16,031.10
Deferred Revenue	(3,754.48)
Funded Grants	<u>(51,923.00)</u>
Net Cash Provided by Operating Activities	<u>(39,528.17)</u>
Net Change In Cash for the Period	(39,528.17)
Cash At the Beginning of the Period	<u>90,940.68</u>
Cash at the End of the Period	<u><u>\$ 51,412.51</u></u>

Memo:

Restricted/Committed Cash

Plainfield Township Donation to the Kent County Brook Trout Study	\$ 15,000.00
Schrems Donation to the Kent County Brook Trout Study	6,919.00
Rogue River HRI (Annual Donation)	5,000.00
Two New Salmon in the Classroom Programs	2,000.00
Dr. Mark Luttenton Cedar Creek Brook Trout Study	<u>2,700.00</u>
Total Restricted	<u>\$ 16,619.00</u>
Unrestricted Cash	<u>34,793.51</u>
Total Cash	<u><u>\$ 51,412.51</u></u>

Financial Statement Comments

Schrems Board of Directors reviews and approves all Chapter transactions including:

- All purchases, checks written and credit card transaction, bank account reconciliations and financial statements on a monthly basis, and all supplier contracts, the annual banquet budget and all conservation projects approved prior to execution.
- **Year-end Cash.** We closed fiscal 2015 with a cash balance of \$51,413 with \$16,619 in restricted funds (see above) and \$34,794 in unrestricted cash which will be used to fund future habitat projects, the 2016 banquet and other membership events.
- **Audit.** Our financials are audited on a semi-annual basis by an independent accounting firm. Our next audit will take place following year-end 2016.

About Schrems

Schrems West Michigan Trout Unlimited was founded in 1962 to address the concerns for the health of our local streams and the wild trout that live in them. With that point in mind, our chapter is involved in many activities ranging from river clean-ups, in-stream habitat monitoring, bank reconstruction, fish shocking, invertebrate studies and fly fishing clinics. We execute these programs by marshalling volunteers from the community and from our dedicated Trout Unlimited members. Our overall goal is to protect and restore our cold water resources so that future generations can enjoy them as much as we do today.

Donate/Contact

The work we do would not be possible without the support of our members. Your donations are put to good use funding activities such as the Schrems Scholarship, Salmon in the Classroom, Trout Camp, Membership seminars and various habitat/conservation programs.

If you would like to donate to the Chapter, you can do so via the PayPal link on our website, www.swmtu.org, or by mailing your donation to Schrems West Michigan Trout Unlimited, P.O. Box 230094, Grand Rapids, MI 49523.

When making a donation, please provide an address so that we may send you a thank-you note along with a receipt for your donation. Also, if you would like to designate your contribution to a specific program such as education, scholarship, conservation, etc. please let us know and we will honor your request.

Membership

Make a difference and become a Trout Unlimited member by visiting our website <http://www.swmtu.org/general/join-trout-unlimited>.

Board Members (Bold) & Other Key Members

Jeff Edwards, President, 616-514-7121, jedwards27@msn.com

Ellie Frey Zagel, Vice President, 616-331-6827, freyel@gvsu.edu

Larry Risbridger, Secretary, 616-690-0692, elrisbridger@charter.net

Tom Mundt, Treasurer, 616-485-1426, tommundt@gmail.com

Lance Climie, Banquet Chair, 616-307-3971, lanceclimie@hotmail.com

Steve Frendt, Membership Chair, 616-540-0742, sfrendt@dartbank.com

Pete Miller, Conservation Chair, 417-420-4003, peterbmiller9@gmail.com

Marci Cisneros, mcisneros@visitgrandhaven.com

Michael Crittenden, michael@mackinawharvest.com

Steven Brinks, snbrinks@sbcglobal.net

Marc Montpetit, 616-656-4310, marcmontpetit@290signs.com

Mark Gurney, 616-635-0937, megurney1234@gmail.com

Don Messinger, 616-846-7600, dmessinger@messingerlegalservices.com

George Zuiderveen, 616-240-4176, ggzuider@sbcglobal.net

Eric Doyle, 616-634-8494, ericdoyle@me.com

Al Woody, awoody@comcast.net (MITU representative)

Nichol De Mol, Project Manager, Rogue River Home Rivers Initiative, 231-557-6362, ndemol@tu.org

SCHREMS WEST MICHIGAN

Environmentally Involved

Since 1962



TROUT UNLIMITED



Annual Banquet

Our Chapter's major fund raiser will be held on Tuesday, April 19, 2016 at Watermark Country Club. Save the date and join us for a fun and informative event. Please visit our website , www.SWMTU.org for upcoming events and project updates.